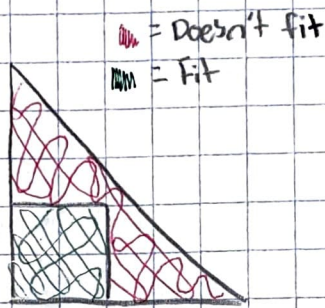


# Stella<sup>5th</sup> Triangle in a Square

## Size

I am not convinced that a triangle can always fit in a square because for a example, a large triangle cannot fit in a small square even though a triangle has 3 sides and a square has 4 sides, a "triangle" doesn't always fit inside because SIZE matters.



## Shape & Type

\* Square is 3x3

There is only 1 type of square that can be any size but there are multiple types triangles that can be any size. Some of the types are the scalene triangle, the isosceles triangle, equilateral triangle, and a right triangle. Some of the things

■ = Fit

■ = doesn't fit

