

# △ Triangle in a Square □

Anna Lu

Step 1

A triangle has 3 sides.

This is true. Any triangle no matter the type; has three sides. "Tri" is a prefix that means 3.

Any triangle has 3 sides.

Step 2

A square has 4 sides.

This is true as well. A square is a quadrilateral and any quadrilateral has 4 sides. "Quad" means 4.

Step 3

3 is smaller than 4.

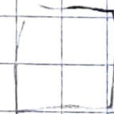
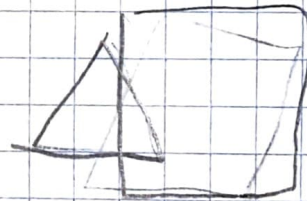
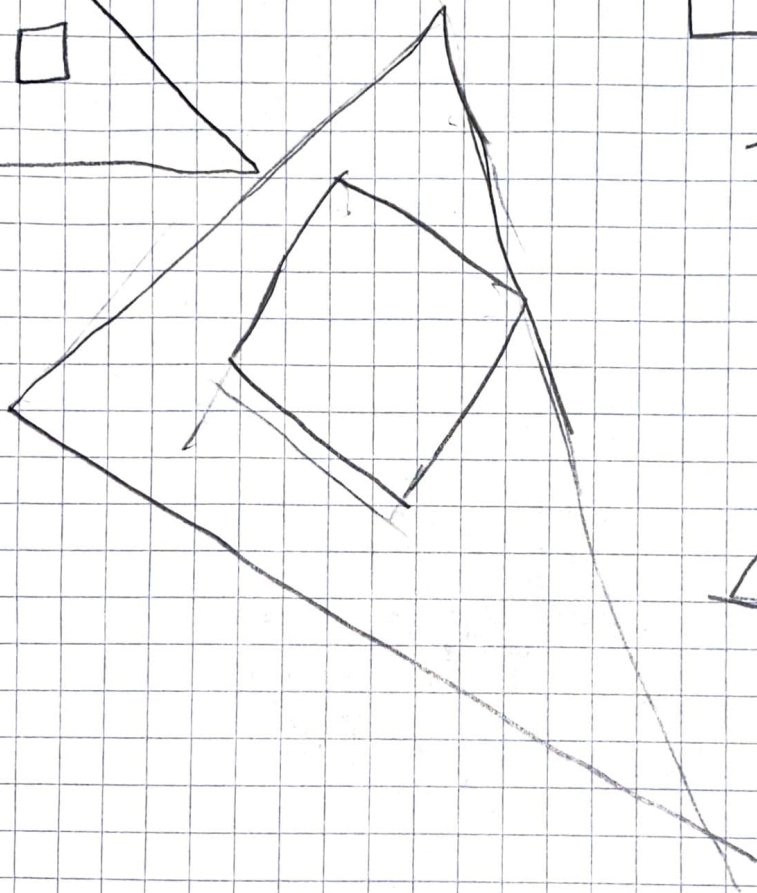
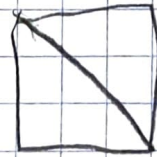
This is also true. 4 is one more than 3. When your counting 4 right after 3.  $4-1=3$  and  $3+1=4$ .

# Step 4

This step is wrong because the triangle could be bigger than the square. Then, the triangle wouldn't fit in the square. It doesn't matter how many sides the shape has, it matters how big the shape is.

---

Examples:



FIVE STAR.  
★★★★★

FIVE STAR.  
★★★★★

FIVE STAR.  
★★★★★

FIVE STAR.  
★★★★★